



AEROSPACE ENGINEERING BULLETIN



AA

29

Supersedes AEB-243

AIRCRAFT BAND CLAMPS



- SIMPLIFIED STOCK**
- LONG LIFE**
- VIBRATION PROOF**
- NUMEROUS SIZES**
- CORROSION RESISTANT**

Types of Clamps Available

CRADLE SUPPORT LATCH CLAMP

A band clamp with integral support cradle for mounting purposes.

BRACKET SUPPORT CLAMP

A clamp which includes brackets or lugs for securing to adjacent structure, or for means of attachment of small tubing or accessories.

QUICK-COUPLER CLAMP

Particularly suitable for removable equipment. Snap-on latch provides instant removal and fast installation.

T-BOLT CLAMPS

Provide even circumferential take-up and assure efficient seal for all types of hose and duct connections.

MULTIPLE TAKE-UP CLAMP

Used as a sleeve, collar, or cover. Adapted for extra wide joints. Available with either T-Bolt or Quick-Coupler latch.

Stainless Steel Cradle Support Quick Coupler Latch Clamp



Series Number ▶	914	915	916	917	918	919
Diameter Range	150 thru 250		225 thru 450		450 thru 1400	
Pad*	No	Yes	No	Yes	No	Yes
Dimension A	2.50		2.75		4.00	
Dimension B	3.25		3.50		4.75	
Dimension C	.16		.31		.41	
Dimension D	.020 x 1.00		.020 x 1.00		.025 x 1.00	
Dimension E	.040		.050		.063	

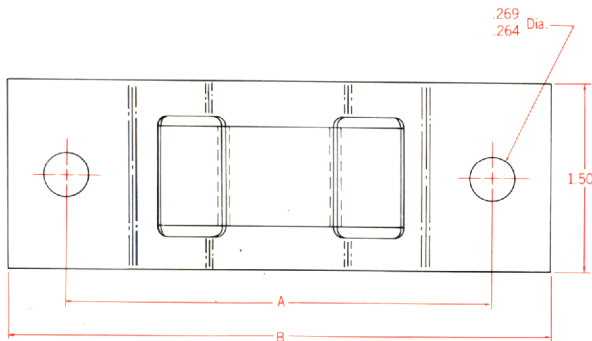
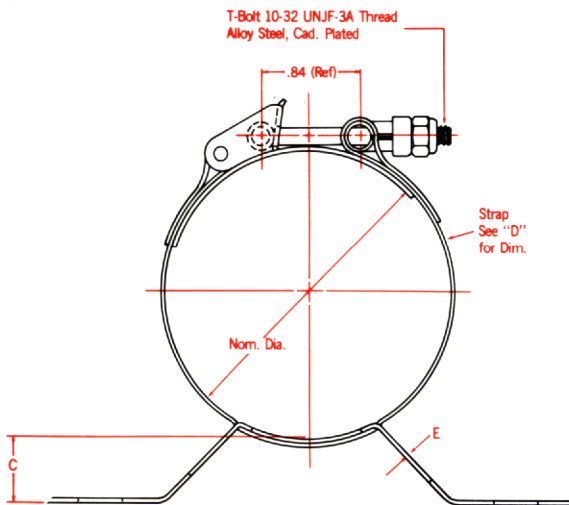
all dimensions in inches

* $\frac{1}{16}$ x 1 Cork Neoprene Pad per MIL-T-6841 cemented to inside surface of band and tongue. Nominal dia. taken from band surface—add $\frac{1}{8}$ " to required I.D. when ordering padded series.

All Parts Stainless Steel unless otherwise specified

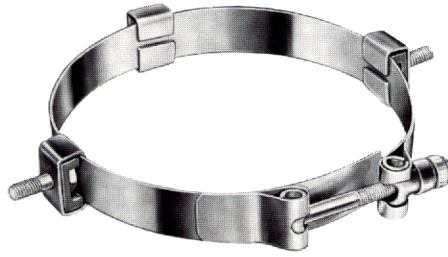
Part Number Code :

914, 915, 916, 917, 918, 919-000 X
 Part Number _____
 Nom. dia (100 = 1 inch) _____
 Nut (see below) _____



Code	NUT CODING		Recommended Use
SH	Self-Locking, Cadmium Plated, Steel		Applications up to 550°F (287°C)
S	Self-Locking, Cadmium Plated, Steel		Applications up to 250°F (121°C)
D	Plain Hexagon Silver Plated, Stainless Steel, with Lock-wire hole		Applications up to 800°F (426°C)
M	Self-Locking, Silver Plated, Stainless Steel For CRES T-Bolt only		Applications up to 1200°F (648°C)

Lug and Clip Support T-Bolt Latch Clamps



T-Bolt Latch Lug Support Clamp

T-Bolt Latch Clip Support Clamp

	Clamp With T-Bolt Latch Part Number	Clamp With Quick Coupler Latch Part Number	
Lug Support Clamp	901	900	
Clip Support Clamp	902	903	

LUG SUPPORT CLAMP

Part Number Code 900 - 550 - 3 - 10A S
901 - 550 - 3 - 10A S

Part Number _____

T-Bolt Code _____
 — = Alloy Steel
 A or C = A286 CRES

Nom. Diameter (100 = 1.00 in.) _____
 Min. = 1.25
 Max. = 30.00

Number of Lugs _____

Tongue _____
 — = none
 T = with tongue

Bolt Length (dash no. same as ANS bolt) _____

Nut Code (see page 2) _____

CLIP SUPPORT CLAMP

all dimensions in inches

Part Number Code 902 - 500 - 3 S
903 - 500 - 3 S

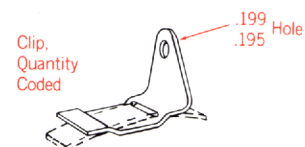
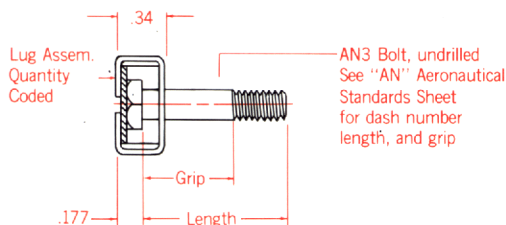
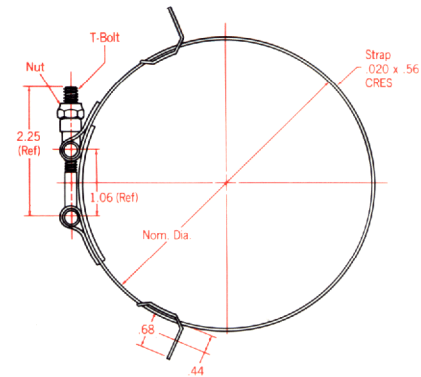
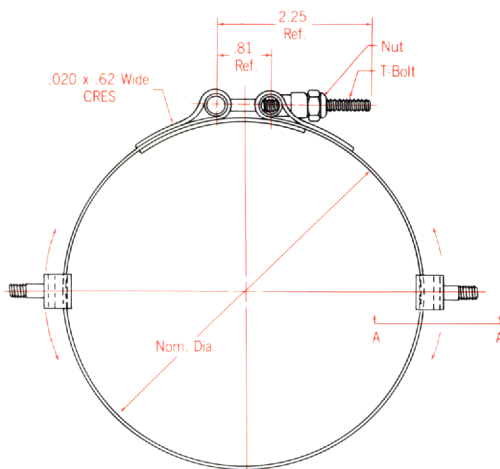
Part Number _____

T-Bolt Code _____
 — = Alloy Steel
 C = A286 CRES

Nom. Diameter (100 = 1.00 in.) _____
 Min. = 1.25
 Max. = 30.00

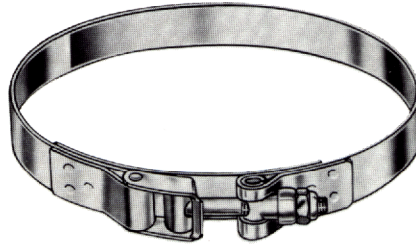
Number of Lugs _____

Nut Code (see page 2) _____



View A-A

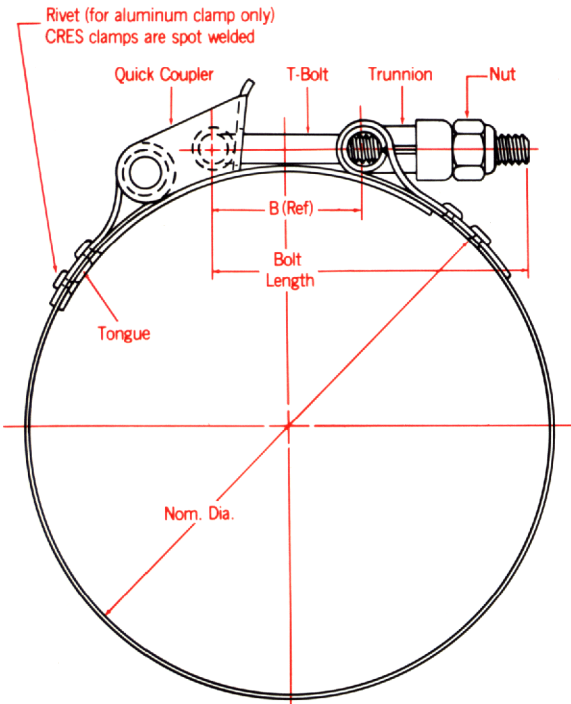
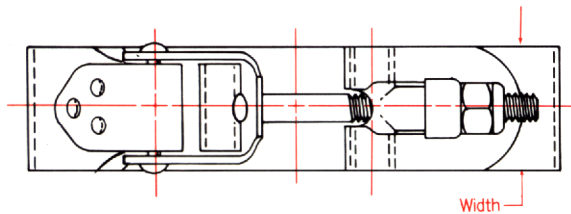
Quick Coupler Clamp



Series Number ▶	Stainless Steel	360	—	365	—	450	—	455	—	550	—	555	—
Series Number ▶	Aluminum	—	361	—	366	—	451	—	456	—	551	—	556
	Minimum Width	.50	.62	.52	.62	.75	.75	.75	.75	.88	.88	.88	.88
	Maximum Width	1.75	1.00	2.25	1.00	2.50	2.50	2.50	2.50	3.00	3.00	3.00	3.00
	Dimension B (Ref.)	.81	.81	1.19	1.19	1.25	1.25	2.00	2.00	1.25	1.25	2.00	2.00
Band Gage	Stainless Steel	.020	—	.020	—	.025	—	.025	—	.050	—	.050	—
	Aluminum	—	.032	—	.032	—	.032	—	.032	—	.063	—	.063
Band Material	Stainless Steel	301 ¼ or ½ hard Stainless Steel											
	Aluminum	6061—T4 or T6 Aluminum Alloy											
Bolt	UNJF-3A per MIL-S-8879	10-32	10-32	¼-28	¼-28	5/16-24	5/16-24						
	Size	× 1.75	× 2.25	× 2.50	× 3.50	× *	× *						
	Material	See Part Number Code Below											
	Minimum Diameter	1.25	1.25	1.38	3.00	1.75	4.00	4.00	7.00	3.25	3.00	6.50	6.50
Diametrical Adjustment	Plus	.03	.03	.09	.09	.04	.04	.14	.14	△	△	.16	.16
	Minus	.10	.10	.25	.25	.20	.20	.50	.50	△	△	.50	.50

all dimensions in inches

*See table below for bolt length



Part Number Code 360 C 75-300 M
 Series Number _____
 Bolt Material (See below) _____
 Width in 1/8" increments (100 = 1 in.) _____
 Nom. Dia. (100 = 1 in.) _____
 Nut (See page 2 for code) _____

NOTE: In some instances the strap width exceeds T-bolt, trunnion and latch widths.

All clamps (except 500 series) are furnished with alloy bolts. If stainless steel bolt is required, add "C" where indicated in Part No. Code. 500 series clamps furnished with stainless steel bolt only.

A or C = A286 per AMS 5732/5737

Alloy Bolt = 4037 or 8740 alloy steel

Dia. Range	△		Bolt length for series shown			
	Plus	Minus	550	551	555	556
3.50 to 5	.10	.14	3.00		—	
5 to 10	.16	.14	3.50		4.50	
10 to 20	.17	.14	4.00		5.00	
20 and over	.24	.14	4.50		5.50	

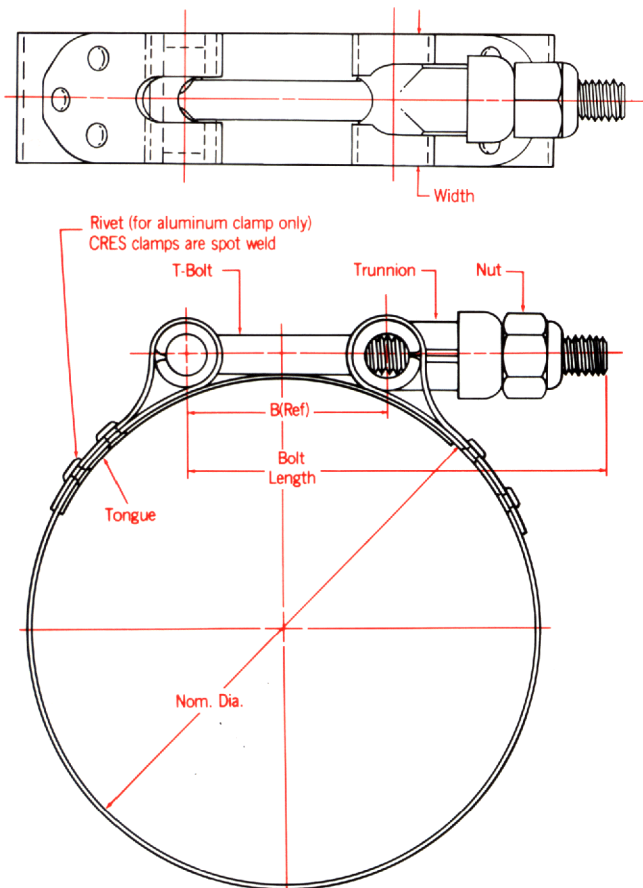
T-Bolt Clamp



Series Number ▶	Stainless Steel	320	—	325	—	420	—	425	—	520	—	535	—	620	625
Series Number ▶	Aluminum	—	321	—	326	—	421	—	426	—	521	—	536	—	—
	Minimum Width	.50	.62	.50	.62	.62	.75	.62	.75	.88	.88	.88	.88	1.00	1.00
	Maximum Width	1.00	1.50	1.75	2.25	1.75	2.50	2.25	1.50	3.00	3.00	3.00	3.00	2.00	2.00
	Dimension B (Ref.)	.81	.81	1.19	1.19	1.19	1.19	2.00	2.00	1.25	1.25	2.00	2.00	1.38	2.00
Band Gage	Stainless Steel	.020	—	.020	—	.025	—	.025	—	.050	—	.050	—	.063	.063
	Aluminum	—	.032	—	.032	—	.032	—	.032	—	.063	—	.063	—	—
Band Material	Stainless Steel	301 ¼ or ½ hard Stainless Steel													
	Aluminum	6061—T4 Aluminum Alloy													
Bolt	UNJF-3A per MIL-S-8879	10-32 × 1.75	10-32 × 2.25	¼-28 × 2.50	¼-28 × 3.50	⅝-24 × *	⅝-24 × *	¾-24 × *	¾-24 × *	1-24 × *	1-24 × *	1-24 × *	1-24 × *	1-24 × *	1-24 × *
	Material	See Part Number Code Below													
	Minimum Diameter	1.18	1.50	1.75	2.50	1.50	2.50	4.56	7.00	3.00	3.00	6.00	5.12	4.00	7.00
Diametrical Adjustment	Plus	.03	.03	.06	.06	.06	.06	.16	.16	.09	.09	.16	.16	.09	.16
	Minus	.10	.10	.22	.22	.22	.22	.47	.47	.15	.15	.50	.50	.14	.37

all dimensions in inches

*See table below for bolt length



Part Number Code

Series Number 320 C 75-300 M

Bolt Material (See below) _____

Width in ⅛" increments (100 = 1 in.) _____

Nom. Dia. (100 = 1 in.) _____

Nut (See page 2 for code) _____

NOTE: In some instances the strap width exceeds T-bolt, trunnion and latch widths.

All clamps (except 500 and 600 series) are furnished with alloy bolts. If stainless steel bolt is required, add "C" where indicated in Sample Part No. Code. 500 and 600 series clamps furnished with stainless steel bolt only.

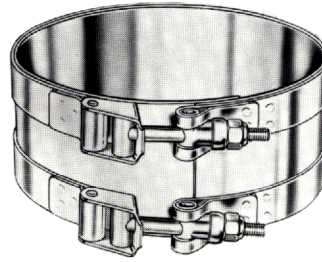
A or C = A286 per AMS 5732/5737

Alloy Bolt = 4307 or 8740 alloy steel

Dia. Range ▼	Bolt length for series shown					
	520	521	535	536	620	625
3 to 5	3.00	—	—	—	—	—
5 to 10	3.50	—	4.50	—	3.50	4.50
10 to 20	4.00	—	5.00	—	4.00	5.00
20 & over	4.50	—	5.50	—	4.50	5.50

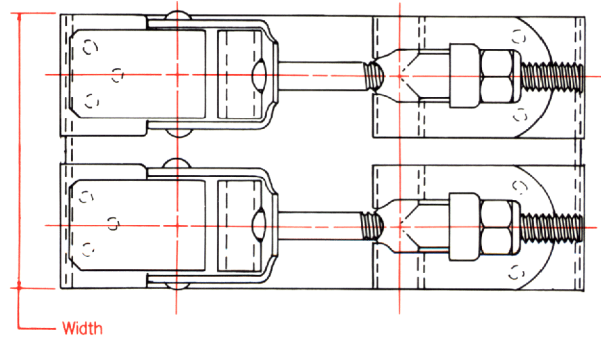
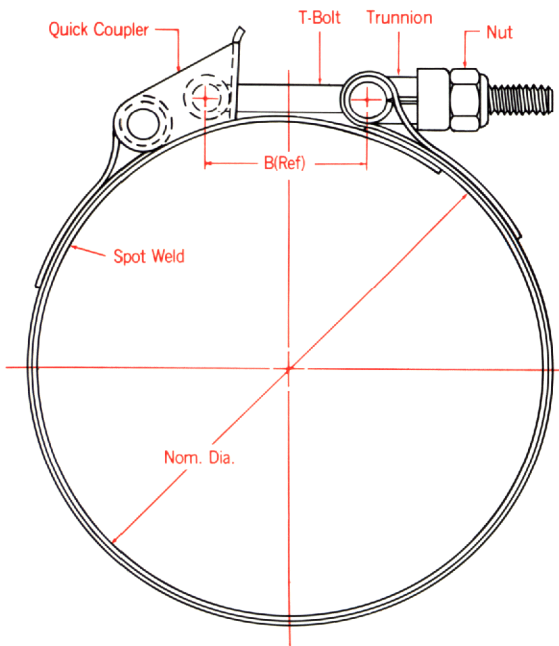
See page 7 for Maximum Recommended Net T-Bolt Torque.

Quick Coupler Latch Multiple Take-up Clamp



Quick Coupler Latch

Series Number ▶		336	338	446	448
Sleeve Minimum Width		1.50	1.50	2.00	2.00
Sleeve Maximum Width		6.00	6.00	6.00	6.00
Strap Width		.62	.62	.75	.75
Dimension B (Ref.)		.81	1.19	1.19	2.06
Sleeve/Strap	Gage	.020/.020	.020/.025	.025/.025	.025/.032
	Material	301 ¼ or ½ Hard Stainless Steel			
Bolt	UNJF-3A per MIL-S-8879 Size	10-32 x 1.75	10-32 x 2.25	¼-28 x 2.50	¼-28 x 3.50
	Material	See Part Number Code Below			
Minimum Diameter		2.00	3.00	4.00	7.00
Diametrical Adjustment	Plus	.03	.06	.06	.14
	Minus	.10	.25	.25	.50



Part Number Code 336 C 75-550 M

Series Number _____

Bolt material (See below) _____

Width in ¼" increments (100 = 1 in.) _____

Nom. Dia. (100 = 1 in.) _____

Nut (see page 2 for code) _____

*All clamps are furnished with alloy bolts. If stainless steel bolt is required, add "C" where indicated in Sample Part No. Code.

A or C = A286 per AMS 5732/5737
Alloy Bolt = 4037 or 8740 alloy steel

Maximum Recommended Net T-Bolt Torque

Installation Torque = Net Torque + Nut Free Running Torque
 Nut Free Running Torque Varies with Nut Style

Part No.	Torque Inch Pounds
320	*
321	*
325	50
326	25
336	50
338	50
360	50
361	25
365	50
366	25
420	50
421	40
425	50
426	40
446	70
448	70
450	70
451	40
455	70
456	40

Part No.	Torque Inch Pounds
520	200
521	100
535	200
536	100
550	200
551	75
555	200
556	75
620	*
625	300
900	40
901	40
902	40
903	40
914	50
915	50
916	50
917	50
918	50
919	50

*See Drawing.